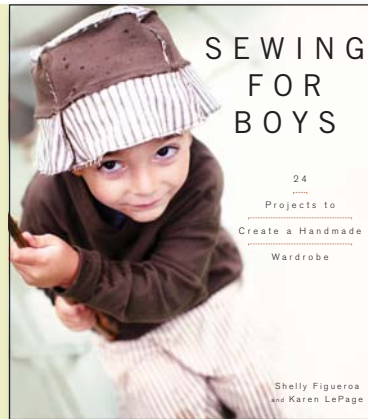


let's go fishing hat

Project reprinted with permission from:

Sewing for Boys:
24 projects to create a handmade wardrobe
Wiley, 2011

By Karen LePage
and Shelly Figueroa



let's go fishing hat

intermediate

The raw edges and patchwork nature of this hat are the definition of "casual." Use up your scraps or old shirts and make a hat your boys will actually wear.

supplies

Fabric Requirements: scraps of fabric from garments you've made or an outgrown shirt you'd love to find a use for and save. You'll need $\frac{1}{4}$ yd. for each fabric and $\frac{1}{4}$ yd. for interfacing, if desired.

Recommended Fabrics: any knit or woven fabric.

Notions: coordinating thread, medium-weight interfacing (for stabilizing knit or adding additional body to the hat, if desired).

All seams are $\frac{1}{4}$ " unless otherwise stated.

cut the fabric

For this hat, you'll need to cut the fabric using the pattern pieces

Body: Cut 4 each from main and contrast fabrics and interfacing.

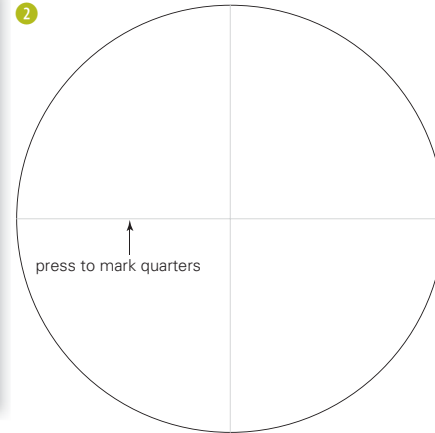
Top: Cut 1 each from main and contrast fabrics and interfacing.

Brim: Cut 4 each from main and contrast fabrics and interfacing.

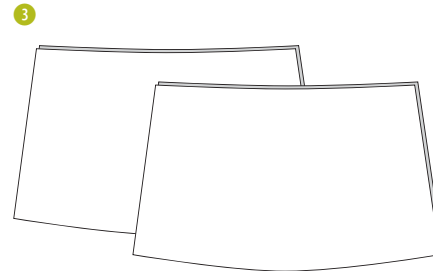
prepare the pieces

- 1 Fuse the interfacing to the WRONG side of the contrast fabric to stabilize, if desired (according to the package instructions).
- 2 Press the hat top in half, and then in half again to mark quarters. A quick press leaves a temporary mark for lining up later.

Optional: You may use pins or chalk to make quarter marks.



- 3 With WRONG sides together, match all pieces: top to top, brim to brim, and body to body—no interfacing should show. You will be working with each pair of pieces as if it were one piece. You can baste with tape, pins, or hand stitches, if you desire.



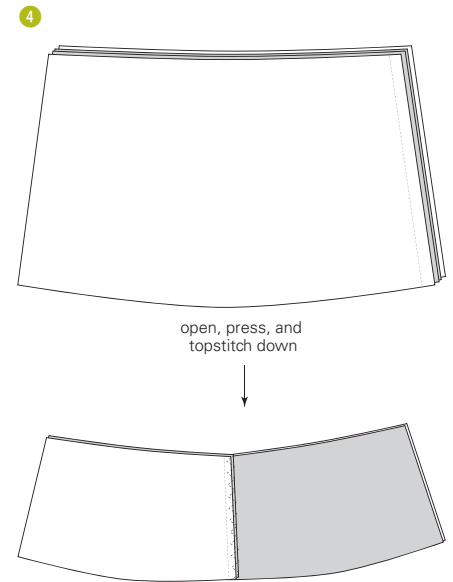
- 5 Attach the hat top to finish the crown. Match each seam with one of the quarter-marks and pin. With the circle on top and the crown sides facing the feed dogs of your sewing machine, stitch around the circle to attach.
- 6 Press the seams down toward the hat sides. Topstitch down, or leave unfinished if you like.
- 7 Begin matching pairs of the brim section of the hat and stitch as before with the body section. Again, feel free to alternate which fabric shows to the outside for a patchwork look.

Optional: When all four sections have been stitched together, press the seams to one side and topstitch.

assemble the hat

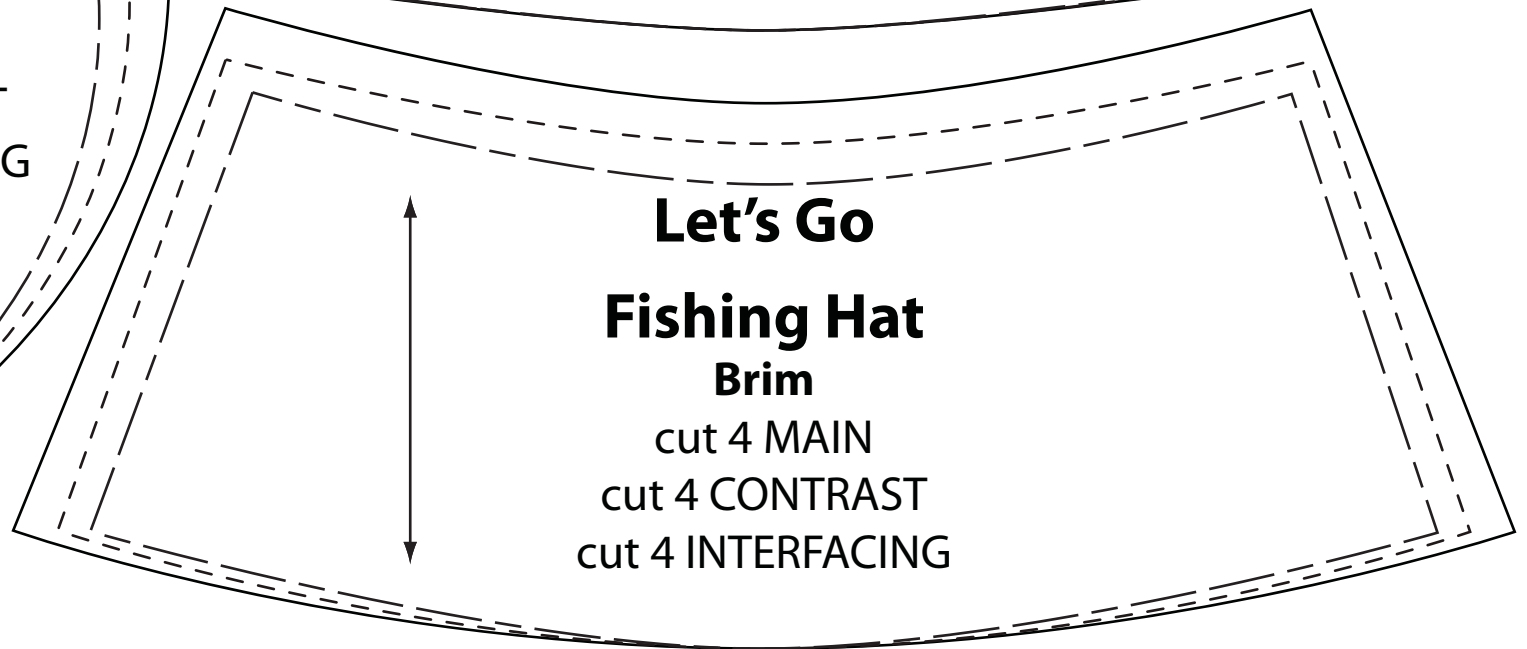
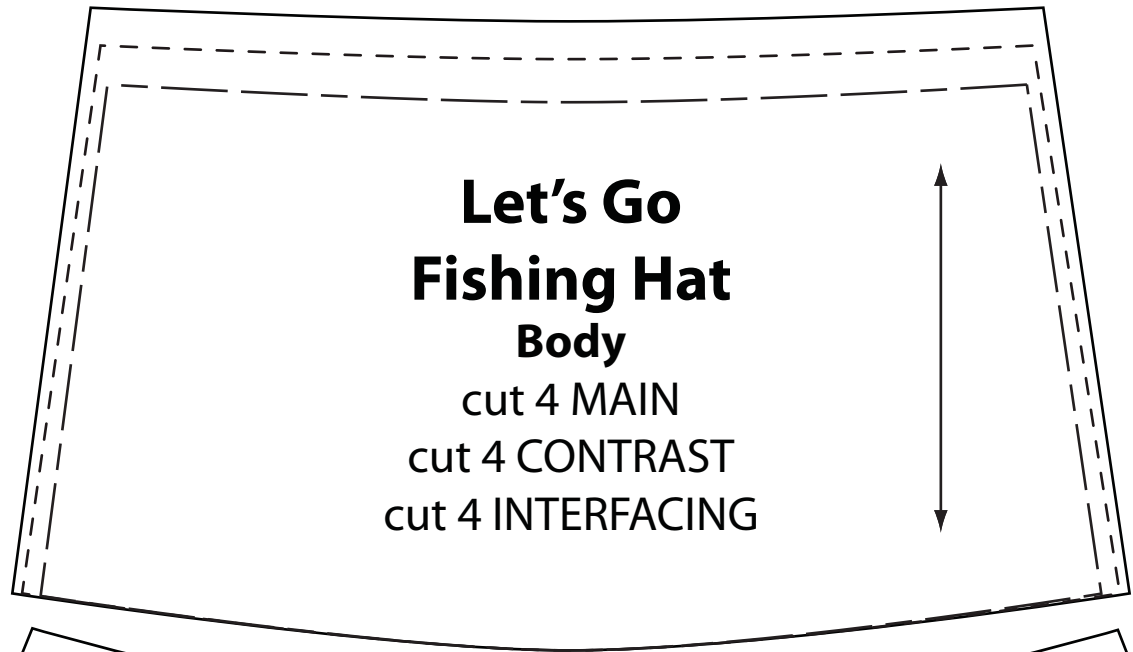
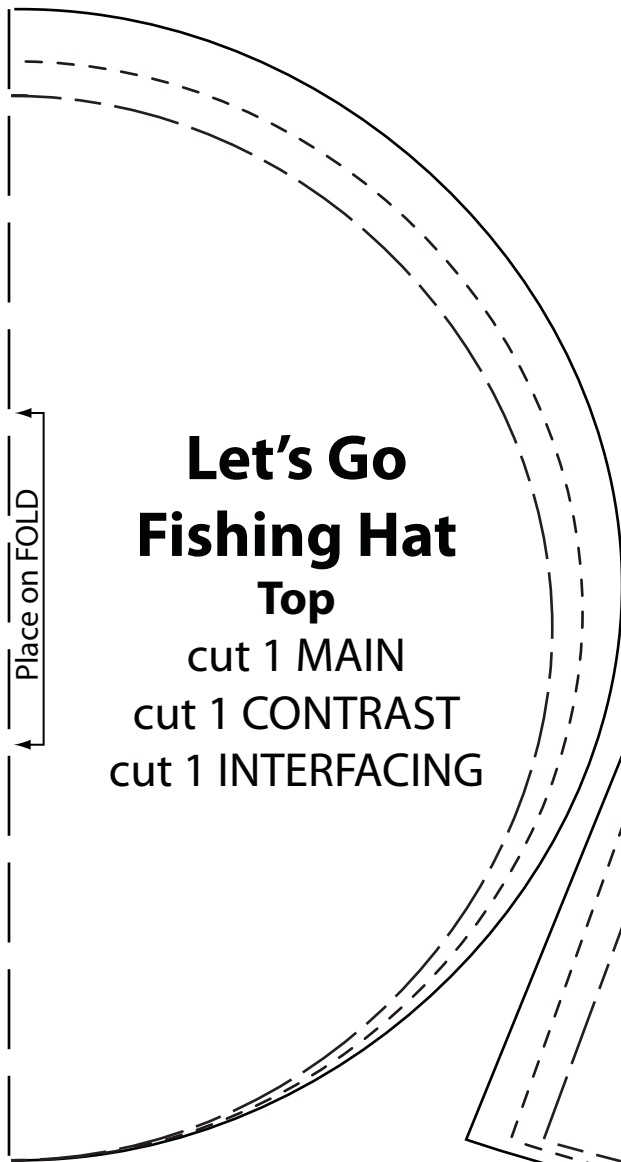
- 4 Begin matching pairs of the body section of the hat and stitch together along their short sides. Feel free to alternate which fabric shows to the outside for a patchwork look.

Optional: When all four sections have been stitched together, press the seams to one side and topstitch. (We like to use a zigzag stitch for fun.)



- 8 Match the brim seams to the crown seams and pin. Stitch together, making sure to keep seams aligned.
- 9 Press the seams toward the brim and either topstitch down or leave unfinished.
- 10 Topstitch the edge of the brim to keep the edges together. We like a zigzag here, but again—it's up to you!

Available September 2011
wherever books are sold



Size Legend	
2/3	_____
4/5	-----
6/7	_____